

# NÝSIR HF.

*INTRODUCTION*

*2009*

# **PFI AND PROPERTIES**

*Iceland, Denmark and the UK*

# Overview of PFI and Properties

- NÝSIR is the leading PFI/PPP and FM company in Iceland
  - Five sports & leisure centres
  - Six schools
- NÝSIR is active in the PFI/PPP market in the UK:
  - NYOP Ruthin (Council Hall)
  - NYOP Education (Yorkshire)
  - Aberdeen, 10 schools
- NÝSIR Denmark Ltd owns public buildings and a business park



# Properties in Iceland

EGILSHÖLL



LAUGAR



LÆKJARSKÓLI



LEIKSKÓLINN KRÓKUR



LEIKSKÓLINN ÁLFASTEINN



LEIKSKÓLINN SJÁLAND



ÍÐNSKÓLINN HAFNARFIRÐI



ÍÞRÓTTAMIÐSTÖÐIN BJÖRK



REYKJAVÍKURVEGUR 74





# Properties in UK and Denmark



KIRBY HILL



RIPON



RUTHIN



BARLBY



BROTHERTON



TIETGENS HAVE

ATRIUM HUSET



# Reykjavík Arena – Sports and Leisure Centre

A full size soccer field, Olympic size skating rink, gymnastics hall, martial arts facilities, fitness centre, guest house, restaurant, indoor shooting range

Size: 24,000 m<sup>2</sup>



# Reykjavík Arena

## Events:

- Concerts
- Corporate Galas
- Trade Shows
- Conventions





# Björk Sport Centre

- A PFI project 2002-2024
- A gymnastics hall, sports and leisure facility
- Is used for training of many top gymnasts at the renowned Björk gymnastics club





# Lækjarskóli, Primary School and Sports Centre

- A PFI project 2002-2028
- A two stream school and sports centre for over 500 6-16 years old pupils
- Serves a neighbourhood area in Hafnarfjörður
- Is an award winning design
- On a site surrounded by lava and a small lake.



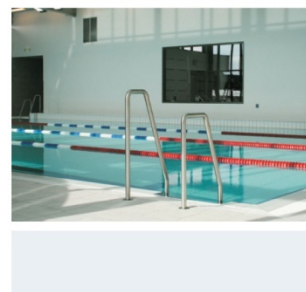
# Laugar - Health and Spa Centre

- An all-embracing complex for sports, leisure, swimming, health, fitness and spa treatments
- One of the most exclusive health and spa centres in Europe
- Has over 3,000 daily visitors
- Connected to a swimming centre owned by the City of Reykjavík



# Lækjarhlíð – Sports Centre

- PPP project 2007-2032
- Two swimming pools
- Games hall
- Fitness centre
- Sauna and hot pools
- Massage and beauty
- Café



# Aberdeen Schools – 3R's Project

- NYOP (Nysir, Operon & Pihl) appointed as preferred bidder
- 10 schools and community facilities to be built in the City
- The Project will regenerate Aberdeen's schools estate to provide a high quality learning environment
- Construction 2007-2009





# High Schools and Sport Facilities

- **Cults Academy** will receive a new school for 1,150 pupils, with community and sports facilities
- **Bankhead Academy** will be built for 650 pupils. Will include a remodelling of the **Beacon Centre**, a community library and redeveloped **Marlpool School**



# **FACILITIES MANAGEMENT**

*UK, Iceland and internationally*

# Nýsir FM

- Total FM for all PFI-projects in Iceland
- Core services: Care-taker, cleaning, energy, groundskeeping, security, waste, furniture, snow clearance.
- Third-party income, e.g. Sports centres
- FM for other properties

# Operon in the UK

- Nýsir hf owns 69%
- Turnover £ 50 m per year
- Facilities management
- M&E design
- Construction managem.
- Env. and energy managem. serv.





# **SERVICES**

*Health, Education, Sports, Leisure and  
Food Services*

# Service companies

HEILSUGÆSLAN SALAHVERFI



MENNTASKÓLINN HRADBRAUT



CAFÉ KONDITORI



LEIKSKÓLINN SJÁLAND



MIDI.IS



ÍÞRÓTTAMIÐSTÖÐIN LÆKJARHLÍÐ



AUSTURBÆJARBÍÓ



AUSTURBÆR – HENNING LARSENS TEGNESTUÐ



# Salus Health Care Centre

- Serves area of 12,000 residents
- Service contract with the Ministry of Health 8+4 years
- Services:
  - Primary health care
  - School nursing
  - Preventive child health program & maternity



# Midi.is

- A leading ticketing company in ticket sales, marketing and distribution
- Midi.is serves Iceland's leading arenas, stadiums, performing arts venues, museums, and theaters
- In 2006 Midi.is handled 215,000 ticket sales on average per month





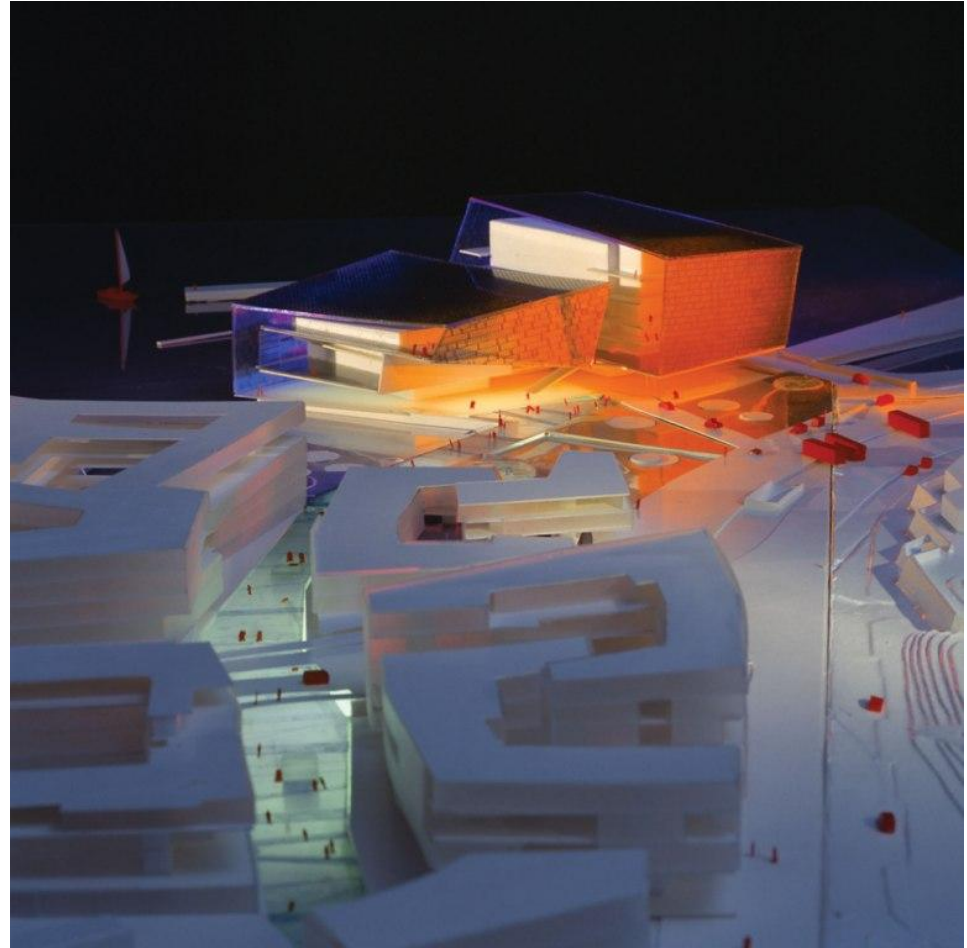
# **INVESTMENTS AND DEVELOPMENTS**

*Various projects*

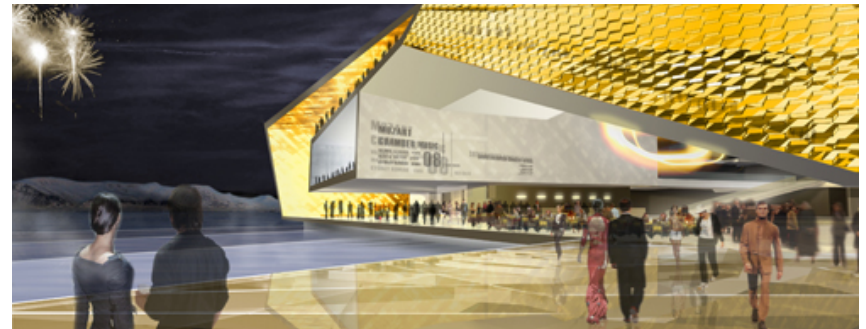
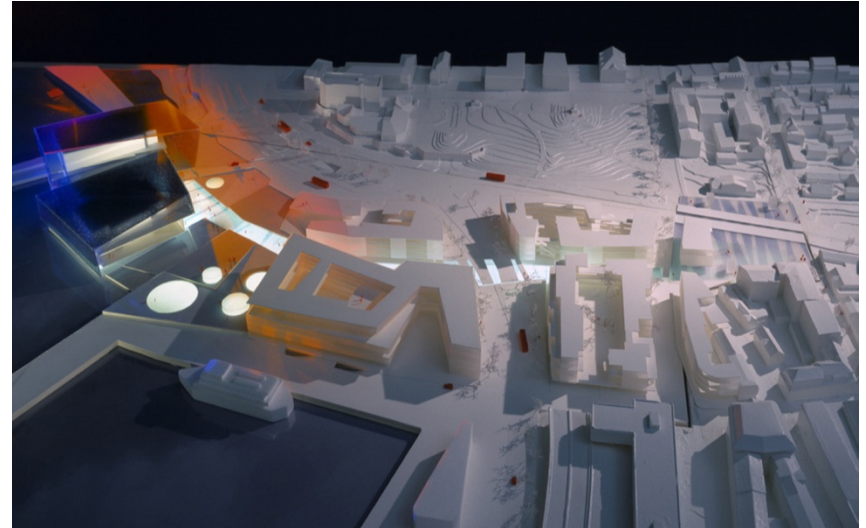
# National Concert and Conference Hall + Waterfront Development

Nýsir is a 50% owner of the Portus Group, the SPV for this PPP project: National Concert and Conference Hall and development of the east harbour area of Reykjavík.

The project encompasses c. 110,000 sq m of buildings and a huge underground space for car parking, retail etc. It will transform the city centre and the waterfront of Reykjavík

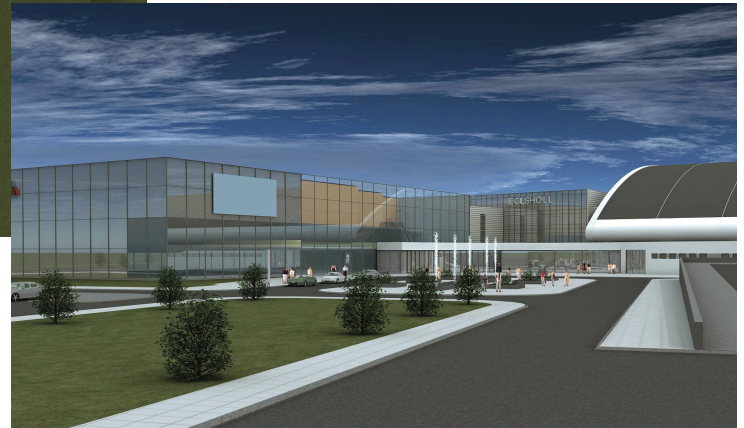
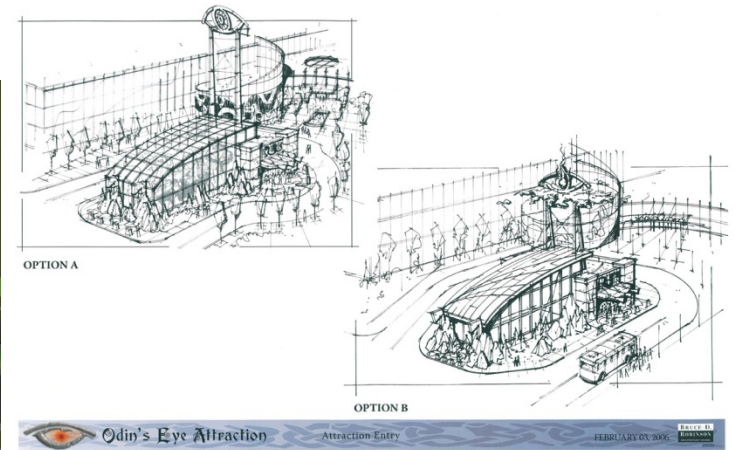


# National Concert & Conference Hall





# Reykjavík Arena - Extension





# Golf ehf.

- First “world class” black sand links golf course in Iceland
- Designed by Nick Faldo
- The site is 1,000 acres of beautiful coastal links
- Will open in 2009
- A clubhouse, hotel and gated golf community with up to 400 houses being planned on site

